

Who is CPS Energy?

Established in 1860, CPS Energy is the nation's largest community-owned provider of electric and natural gas services. We provide safe, reliable, and competitively priced services to **930,114** electric and **381,379** natural gas customers in San Antonio and portions of seven adjoining counties. Our customers' combined energy bills rank among the lowest of the nation's 20 largest cities while generating \$9 billion in revenue for the City of San Antonio over the last 80 years.

Our Vision 2027 strategic plan is designed to guide CPS Energy through rapid transformational change in our city. As a trusted and reliable community partner, we continuously focus on job creation, economic development, and educational investment. We are powered by our skilled workforce, whose commitment to the community is demonstrated through our employees' volunteerism, our community engagement efforts and programs aimed at bringing value and assistance to our customers.



Typical Substation

How can you follow the progress of this project?

The CPS Energy project team will post project information on the CPS Energy website at cpsenergy.com/infrastructure.

Who can answer your questions?

The website will include regular updates on the project as steps are completed.

Also, you may call, write or email to:

CPS Energy

Daniel Otto, Manager, S&T Regulatory Support
Howard Rd. Transmission Line
Rebuild Project
Mail Code RT0801
500 McCullough Ave.
San Antonio, Texas 78215
210-289-9685
DTotto@cpsenergy.com



HOWARD RD. SWITCHING STATION AND TRANSMISSION LINE PROJECT



*Typical
Transmission
Structure*

INFORMATION ABOUT THE HOWARD RD. SWITCHING STATION AND TRANSMISSION LINE PROJECT

What is the Howard Rd. Switching Station and Transmission Line Project?

This project enhancement consists of constructing a new switching station and re-routing the existing high voltage transmission lines in the area. A switching station routes and redirects energy from different sources to different customers. Most of the transmission line work will be done within our property in the area labeled Switching Station found on the project map; however, there are a few portions of transmission line that go outside of our property which are identified by the blue lines on the project map.

The project involves removing and rebuilding portions of the existing transmission lines including adding new foundations, transmission structures (poles) and electrical wires. The several of the existing lattice (webbed) structures will be replaced with steel poles.

Construction is scheduled to begin October 30, 2023 for this next phase of the project. It is scheduled to be completed in May 2025.

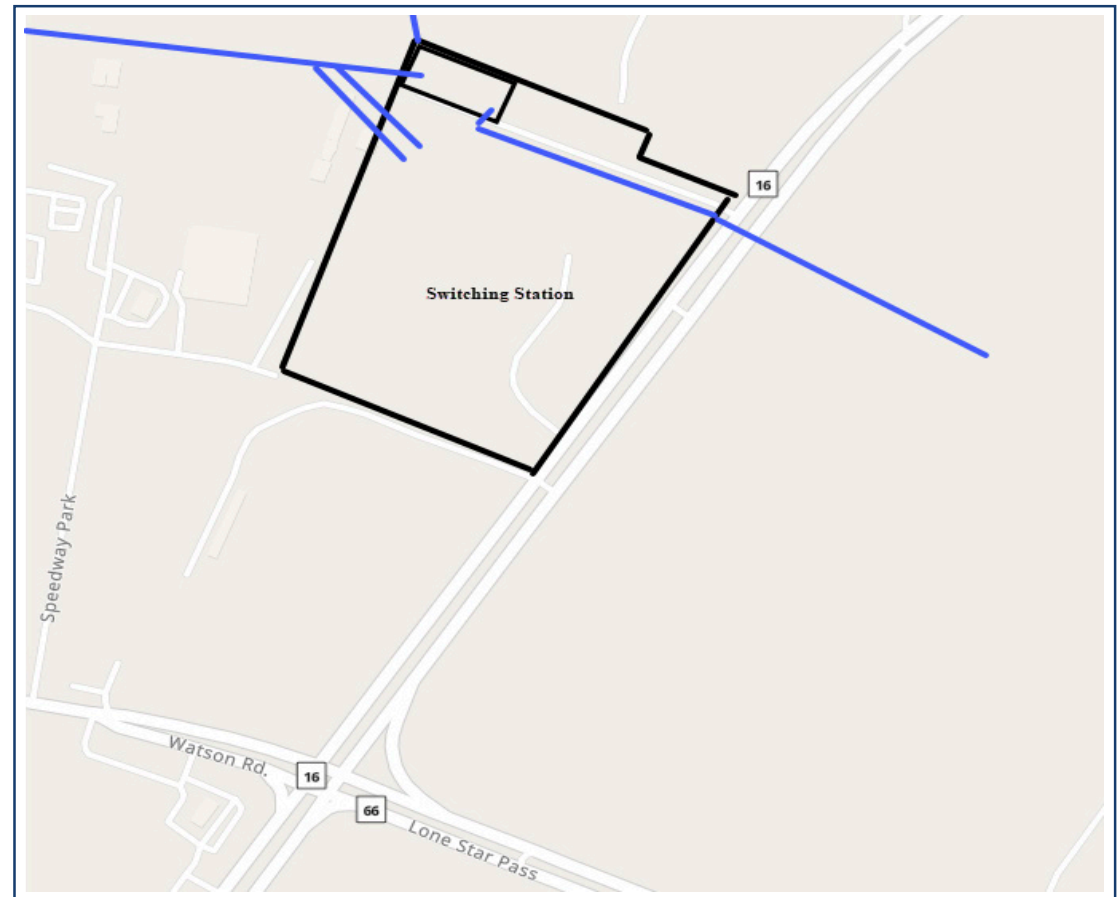
How might this project affect you?

Our contractor will work to minimize impact to area residents and businesses. Construction activities will be focused along the Right-of-Way (ROW) of the existing transmission line route shown on the Project Location Map.

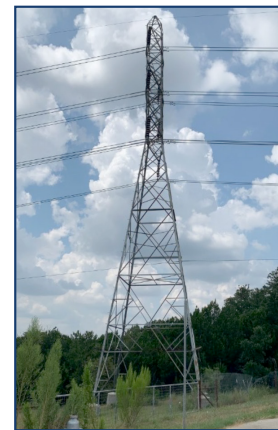
Why is this project needed?

Maintaining our customers' need for reliable electric power is of utmost importance. The project will improve the quality and safety of an aging transmission line and help ensure electric reliability in the area identified on the map. in the area identified on the map.

Project Location Map



Examples of Transmission Line Structures



Existing Lattice Structure



Solid Pole Structure