

Who is CPS Energy?

CPS Energy is the nation's largest municipally owned natural gas and electric utility providing service to approximately 707,000 electric customers and 322,000 natural gas customers in and around the City of San Antonio. The utility ranks among the nation's lowest-cost energy providers while ranking number 1 in wind-energy capacity among municipally owned utilities, and number 1 in Texas in the amount of solar-generated electricity under contract.

CPS Energy's goal is to provide reliable energy in an environmentally responsible way. This brochure is a first step in notifying the public of this project in an effort to work together to achieve that goal. If outages are necessary or the scope of the project changes, the public will be notified via letter and/or door hanger. If you have any questions regarding the project please contact the project manager. His contact information is included in this brochure.

How can I follow the progress of this project?

The CPS Energy project team will post project information on the CPS Energy Web site at www.cpsenergy.com.

(search Grandview)

Who can answer my questions?

The Web site will include regular updates on the project as steps are completed. Also, you may call, write or e-mail to:

CPS Energy

Kevin Phillips, Project Manager

Hunt Lane—Pinn Transmission Project

Mail Code 111008

P.O. Box 1771

San Antonio, Texas 78296-1771

(210) 353-2923

ktphillips@cpsenergy.com



Hunt Lane—Pinn TRANSMISSION PROJECT



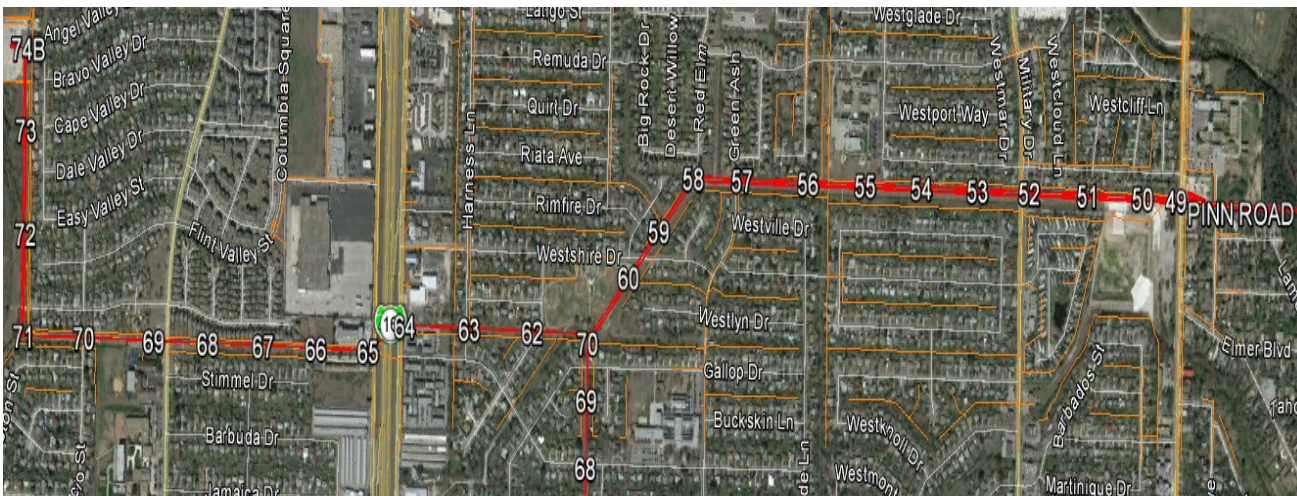
INFORMATION ABOUT THE HUNT LANE TO PINN REBUILD TRANSMISSION PROJECT

What is the Hunt Lane to Pinn Rebuild Transmission Project?

CPS Energy is planning to rebuild an existing double circuit 138 kV transmission line between the Hunt Lane and Pinn Substations. The transmission line route will be approximately four miles long and begins near the existing Hunt Lane Substation near the intersection of Marbach Rd and Hunt Lane. The line proceeds south just past Adams Hill Dr. and turns east along to Lackland Terrace Park and turns northeast for 1500 feet. Then the line proceeds east to Pinn Rd Substation. The project will involve a complete rebuild of the transmission line including foundations, transmission structures (poles) and electrical wires. CPS Energy plans to replace the transmission line along the existing route. However, there will be a change in the type of structures. The existing lattice (webbed) structures will be replaced with steel poles.

The project is scheduled for completion in June 2017.

Project Location Map



Why is this project needed?

The existing CPS Energy electric system must be maintained to serve customers' needs for reliable electric power. This project will improve the quality and safety of an aging transmission line and help ensure electric reliability between the Hunt Lane and Pinn Rd Substations.

How might this project affect you?

As with most projects, construction activities will impact residents in different ways. CPS Energy construction activities will be focused around the proposed highlighted areas.

Activities that may be typical to the entire construction project will be the presence of construction equipment and materials as well as temporary partial road closures while construction is in progress.

Examples of Transmission Structures



Solid Pole Structure



Lattice Structure