

## Who is CPS Energy?

Established in 1860, CPS Energy is the nation's largest community-owned provider of electric and natural gas services. We provide safe, reliable, and competitively priced services to **907,526** electric and **373,998** natural gas customers in San Antonio and portions of seven adjoining counties. Our customers' combined energy bills rank among the lowest of the nation's 20 largest cities while generating \$9 billion in revenue for the City of San Antonio over the last 80 years.

Our Vision 2027 strategic plan is designed to guide CPS Energy through rapid transformational change in our city. As a trusted and reliable community partner, we continuously focus on job creation, economic development, and educational investment. We are powered by our skilled workforce, whose commitment to the community is demonstrated through our employees' volunteerism, our community engagement efforts and programs aimed at bringing value and assistance to our customers.



**Underground Lines Connected to Electric Meter**

## How can you get more information about this project?

Project information is available by project location on our website at [cpsenergy.com/conversion](http://cpsenergy.com/conversion).

## Who can answer your questions?

If you have questions about the project please call, write, or email the Program Manager:

Robert Payne, P.E.

Mail Drop RT0701

P.O. Box 1771

San Antonio, Texas 78296-1771

210-353-2642

[rpayne@cpsenergy.com](mailto:rpayne@cpsenergy.com)



# TRINITY OAKS SUBDIVISION

## SERVICE RELIABILITY PROJECT



**Typical Overhead Electric Line**

# INFORMATION ABOUT THE SERVICE RELIABILITY PROJECT

## What is a Service Reliability Project?

A service reliability project is an investment in our infrastructure to convert certain electric lines from overhead to underground.

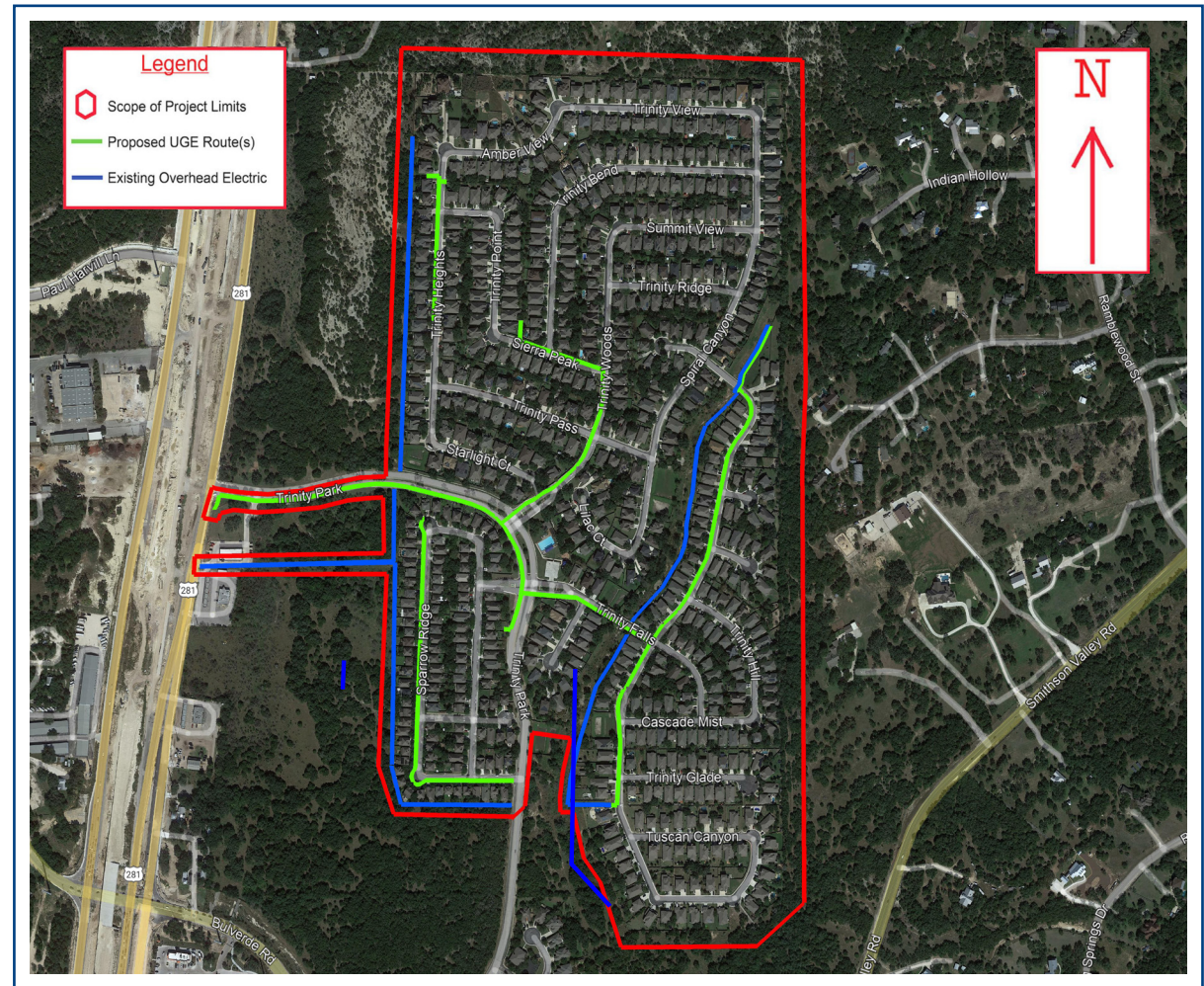
## What are benefits of replacing overhead lines with underground facilities?

Placing electric facilities underground improves service reliability because buried lines are protected from damage by falling tree limbs, animals, balloons, high winds, and other weather impacts. Underground electric lines are safer because they eliminate vehicle collisions with poles, reduce fire hazards, and minimize safety risks caused by downed power lines.

## What work is performed to convert the power lines?

Engineering and construction personnel, including CPS Energy contractors, may perform on site field assessments and construction activities in the easements on properties. These activities may require access to your property, and our personnel will attempt to contact you before entering. Temporary spray paint markings may be made to identify underground utility locations. As our work moves through your neighborhood, crews will ensure your property is returned to the state it was in when work began.

Project information is available at [cpsenergy.com/conversion](http://cpsenergy.com/conversion).



## Trinity Oaks Subdivision (Trinity Park & US 281)

Typical  
Underground  
Electric  
Facilities

