

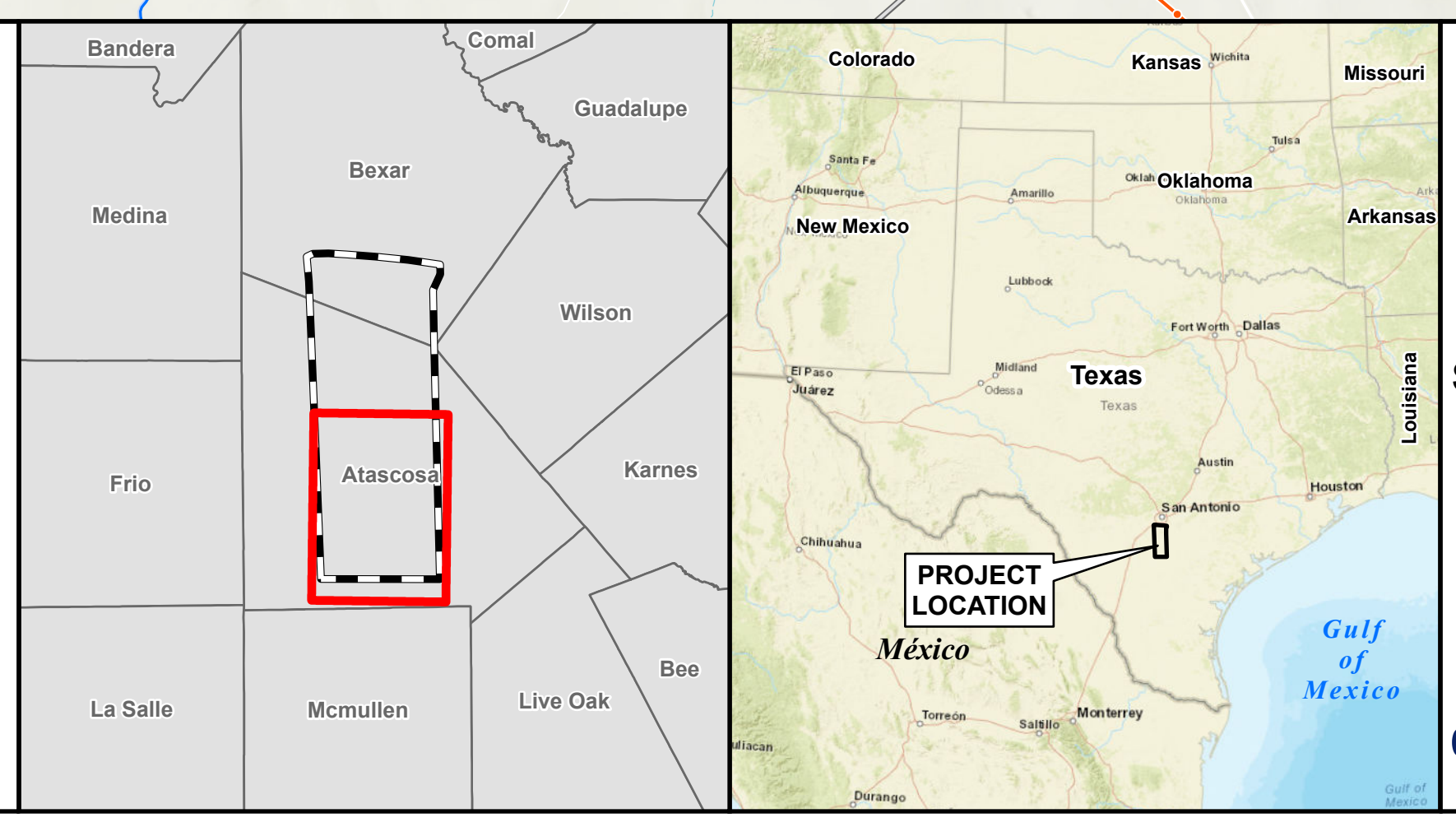
Legend		Existing Utility Features		Transportation Features		Hydrologic Features	
	Proposed Station Location		Existing Substation		Interstate Highway		River / Stream
	Primary Alternative Segment, Label & Node		69-kV Transmission Line		US Highway		Lake / Pond
	Study Area Boundary		138-kV Transmission Line		State Highway		FEMA 100 Year Flood Zone
	Sheet Match Line		345-kV Transmission Line		Farm-to-Market Road		NWI
			Oil / Gas Wells		Railroad		Administrative Features
			Oil / Gas Pipeline (6 inches and above)		Public Airport, Runway		Parcel Boundary
			AM Communication Tower		Heliport		City Limits
			FM, Other, or Microwave Communication Tower				County Boundary
			Church				
			School				
			Cemetery				
			Park				

Note: Sensitive cultural resource data are not shown on this map as these data are not to be reproduced, distributed, or released to the public. Some data layers including property boundaries, pipelines, railroads, and oil/gas well sites obtained from third party sources are inaccurate to varying degrees. These data have not been corrected and should be used as a general guide to feature locations only. Digitization of initial preliminary transmission line segments was performed based on aerial interpretation of these features.

*Only operating pipelines displayed.

Once an alternative route is selected and approved by the Commission, the represented corridor is subject to modification after access has been granted on the ground surveys have been completed to identify unknown constraints or the extent of known constraints.

Some legend symbols are enlarged for easier identification. Base Map: USGS Topographic Map.



Howard Road to San Miguel 345 kV Transmission Line Project

FIGURE 2-4
PRIMARY ALTERNATIVE ROUTING SEGMENTS WITH ENVIRONMENTAL AND LAND USE CONSTRAINTS

0 1 Miles

STEC

POWER

Date: 10/1/2024