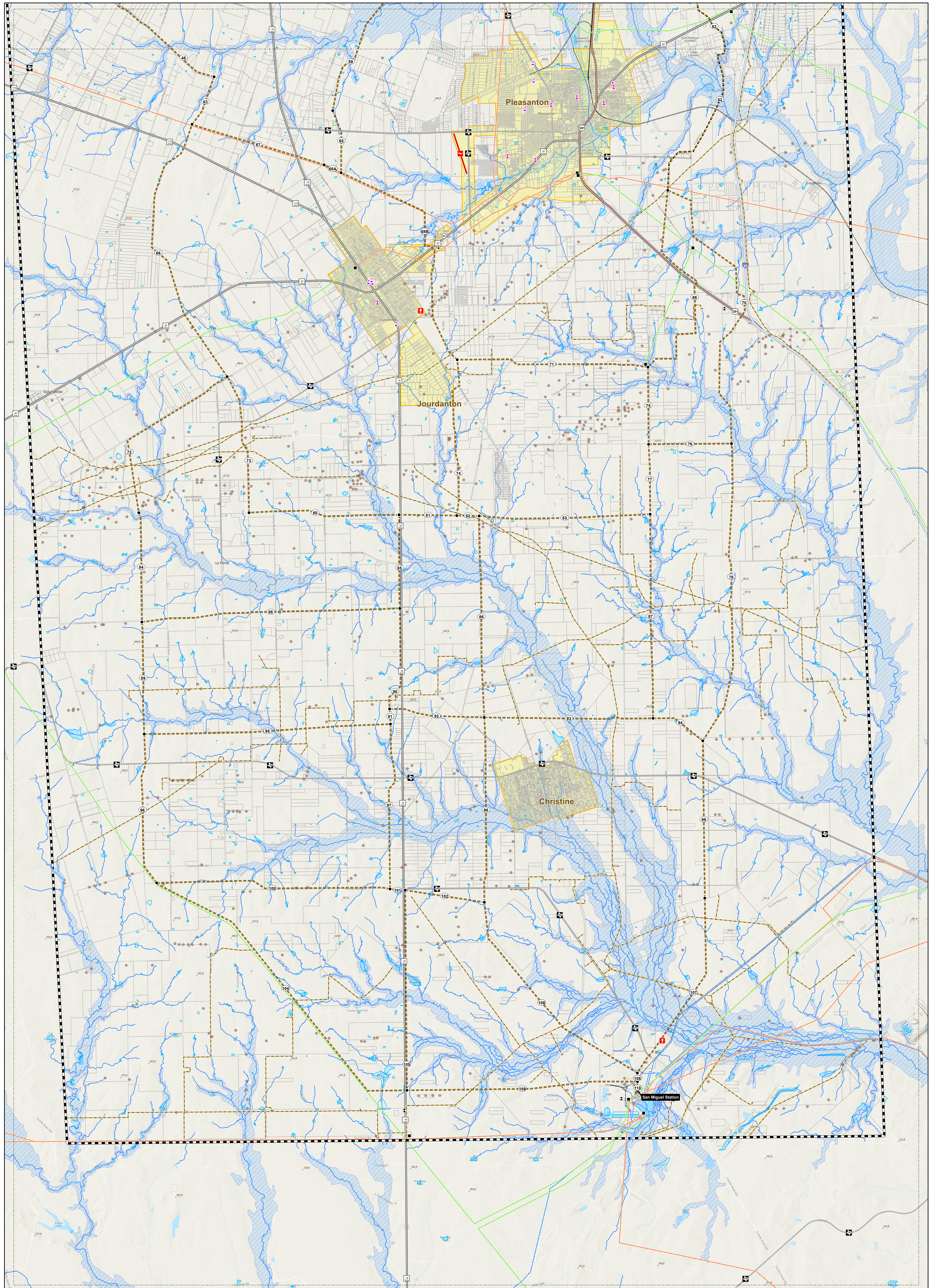




<p>Legend</p> <p>Project Components</p> <ul style="list-style-type: none"> Proposed Station Location Primary Alternative Segment, Label & Node Study Area Boundary Sheet Match Line 	<p>Existing Utility Features</p> <ul style="list-style-type: none"> Existing Substation 69-kV Transmission Line 138-kV Transmission Line 345-kV Transmission Line Oil / Gas Wells Oil / Gas Pipeline (6 inches and above) 	<ul style="list-style-type: none"> AM Communication Tower FM, Other, or Microwave Communication Tower Church School Cemetery Park Approximate Boundaries of Developing Solar Facilities 	<p>Transportation Features</p> <ul style="list-style-type: none"> Interstate Highway US Highway State Highway Farm-to-Market Road Railroad Private Airport, Runway 	<p>Hydrologic Features</p> <ul style="list-style-type: none"> River / Stream Lake / Pond FEMA 100 Year Flood Zone NWI <p>Administrative Features</p> <ul style="list-style-type: none"> Parcel Boundary City Limits County Boundary 	<p>Note: Sensitive cultural resource data are not shown on this map as these data are not to be reproduced, distributed, or released to the public. Some data layers including property boundaries, pipelines, railroads, and oil/gas well sites obtained from third party sources are inaccurate to varying degrees. These data have not been corrected and should be used as a general guide to feature locations only. Digitization of initial preliminary transmission line segments was performed based on aerial interpretation of these features.</p> <p>*Only operating pipelines displayed.</p> <p>Once an alternative route is selected and approved by the Commission, the represented corridor is subject to modification after access has been granted on the ground surveys have been completed to identify unknown constraints or the extent of known constraints.</p> <p>Some legend symbols are enlarged for easier identification. Base Map: USGS Topographic Map.</p>			<p>Howard Road to San Miguel 345 kV Transmission Line Project</p> <p>FIGURE 2-4 PRIMARY ALTERNATIVE ROUTING SEGMENTS WITH ENVIRONMENTAL AND LAND USE CONSTRAINTS</p> <p>0 1 Miles</p> <p> </p> <p>Date: 10/1/2024</p>
---	--	--	---	--	--	--	--	--



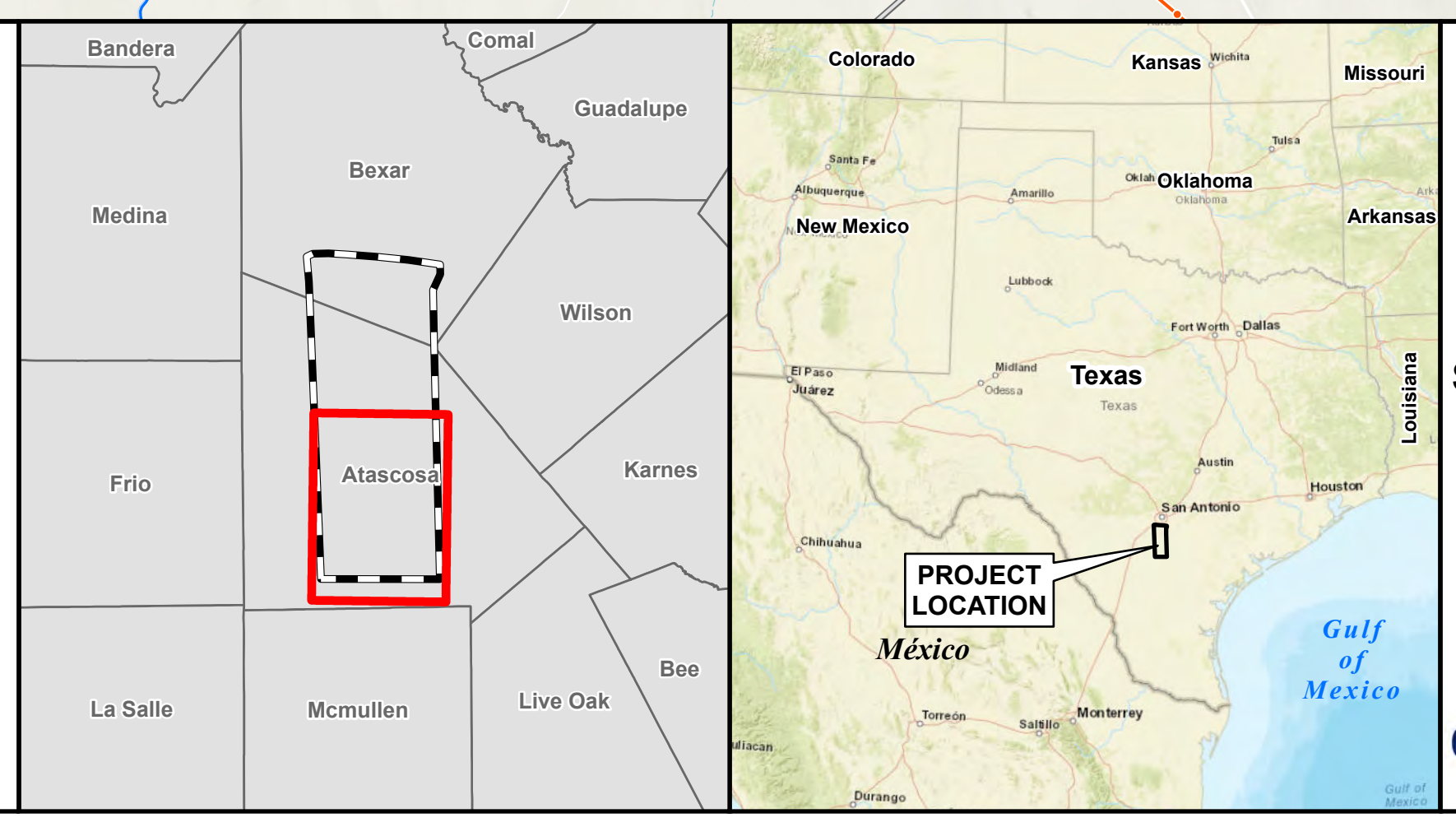
Legend	
	Proposed Station Location
	Primary Alternative Segment, Label & Note
	Study Area Boundary
	Sheet Match Line
	Existing Substation
	69-kV Transmission Line
	138-kV Transmission Line
	345-kV Transmission Line
	Oil / Gas Wells
	Oil / Gas Pipeline (6 inches and above)
	AM Communication Tower
	FM, Other, or Microwave Communication Tower
	Church
	School
	Cemetery
	Park
	Interstate Highway
	US Highway
	State Highway
	Farm-to-Market Road
	Railroad
	Public Airport, Runway
	Helipad
	River / Stream
	Lake / Pond
	FEMA 100 Year Flood Zone
	NWI
	Parcel Boundary
	City Limits
	County Boundary

Note: Sensitive cultural resource data are not shown on this map as these data are not to be reproduced, distributed, or released to the public. Some data layers including property boundaries, pipelines, railroads, and oil/gas well sites obtained from third party sources are inaccurate to varying degrees. These data have not been corrected and should be used as a general guide to feature locations only. Digitization of initial preliminary transmission line segments was performed based on aerial interpretation of these features.

*Only operating pipelines displayed.

Once an alternative route is selected and approved by the Commission, the represented pipeline is subject to modification after access has been granted on the ground surveys have been completed to identify unknown constraints or the extent of known constraints.

Some legend symbols are enlarged for easier identification. Base Map: USGS Topographic Map.



Howard Road to San Miguel 345 kV Transmission Line Project

FIGURE 2-4
PRIMARY ALTERNATIVE ROUTING SEGMENTS WITH ENVIRONMENTAL AND LAND USE CONSTRAINTS

0 1 Miles

STEC

POWER

Date: 10/1/2024