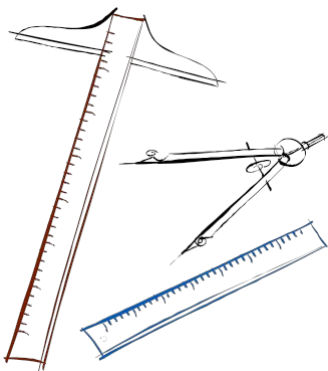


## **Large Commercial Services & Developments**

### **Electric and Gas Service Package**





## Contents:

Á  
Á  
Á

- **ÁThe 15-Week Large Commercial Electric Service Process Á**
- **ÁDocuments Required for Electrical ServiceÁ**
- **ÁLarge Commercial Electric and Gas Service Application Á**
- **ÁElectric and Gas Equipment and Load TemplatesÁ**
- **ÁSpecification Drawings for:Á**
  - **Á Utility Site Requirements (Example)Á**
  - **Á 3-Phase Ductbank (Riser To Pad)Á**
  - **Á 3-Phase Transformer PadÁ**
  - **Á 3-Phase Transformer Pad WTap BoxÁ**
  - **Á 3-Phase Riser Pole And Conduit EncasementÁ**
  - **Á 4 Ft Removable Bollard**
  - **Á Easement Requirements**
  - **Á Temporary Meter Loop (Example)**

Á





# Documents Required for CPS Energy Pad-Mounted Transformer Service

**\*\*\*Documents must be SEALED ENGINEERED DRAWINGS\*\*\***

## Utility Site Plan – Hard Copy/PDF and in AutoCAD 2000 format

- A site plan showing the location of the transformer and the service lines to the transformer.
- A site plan showing the location of the transformer and the service lines to the transformer.
- A site plan showing the location of the transformer and the service lines to the transformer.
- A site plan showing the location of the transformer and the service lines to the transformer.
- A site plan showing the location of the transformer and the service lines to the transformer.
- A site plan showing the location of the transformer and the service lines to the transformer.
- A site plan showing the location of the transformer and the service lines to the transformer.
- A site plan showing the location of the transformer and the service lines to the transformer.

## Electrical One-line Diagram – Hard Copy/PDF and in AutoCAD 2000 format

- A one-line diagram showing the electrical connections between the transformer and the service lines.
- A one-line diagram showing the electrical connections between the transformer and the service lines.
- A one-line diagram showing the electrical connections between the transformer and the service lines.
- A one-line diagram showing the electrical connections between the transformer and the service lines.
- A one-line diagram showing the electrical connections between the transformer and the service lines.
- A one-line diagram showing the electrical connections between the transformer and the service lines.
- A one-line diagram showing the electrical connections between the transformer and the service lines.
- A one-line diagram showing the electrical connections between the transformer and the service lines.

## Electrical Load Summary – Hard Copy/PDF and in AutoCAD 2000 format

- A load summary showing the electrical loads connected to the transformer.
- A load summary showing the electrical loads connected to the transformer.
- A load summary showing the electrical loads connected to the transformer.
- A load summary showing the electrical loads connected to the transformer.
- A load summary showing the electrical loads connected to the transformer.
- A load summary showing the electrical loads connected to the transformer.
- A load summary showing the electrical loads connected to the transformer.
- A load summary showing the electrical loads connected to the transformer.

## Electrical Load Panels – Hard Copy/PDF and in AutoCAD 2000 format

**\*\*\*Documents must be SEALED ENGINEERED DRAWINGS\*\*\***



# Commercial Electric/Gas Service Application

"Please e-mail completed Application form to [ce@cpsenergy.com](mailto:ce@cpsenergy.com) or call (210) 353-4050 for mailing instructions."

Application must be completed and accompanied by the following:  
 Application must be completed and accompanied by the following:  
 Application must be completed and accompanied by the following:  
 Application must be completed and accompanied by the following:

## REQUIRED TO INITIATE WORK REQUEST

\* Date

\* Project Name:

\* Project Address:

\* Electrical Contractor:  \* Phone #:

\* Email:

\* Developer Contact:  \* Phone #:

\* Email:

\* General Contractor Contact:  \* Phone #:

\* Email:

\* Engineer Contact:  \* Phone #:

\* E-mail:

Business Type

<input type="checkbox"/> Office	<input type="checkbox"/> P [ ]	<input type="checkbox"/> Utility
<input type="checkbox"/> Retail	<input type="checkbox"/> P [ ]	<input type="checkbox"/> Utility
<input type="checkbox"/> Industrial	<input type="checkbox"/> Q [ ]	<input type="checkbox"/> Utility
<input type="checkbox"/> Other	<input type="checkbox"/> (Specify Type)	<input type="checkbox"/> Utility
<input type="checkbox"/> Other	<input type="checkbox"/> (Specify Type)	<input type="checkbox"/> Utility

Service Type

<input type="checkbox"/> New Service	<input type="checkbox"/> Other	* Service Required Date: <input type="text"/>
<input type="checkbox"/> Upgrade	<input type="checkbox"/> T [ ]	* Building Square Footage: <input type="text"/>
<input type="checkbox"/> Other	<input type="checkbox"/> U [ ]	

(NOTE: 300kva demand load required to qualify for 3ph padmount transformer)

\*Remodel/Upgrade Meter Number

## REQUIRED TO INITIATE WORK REQUEST

Customer Information

<input type="text"/>	<input type="text"/>	<input type="text"/>
<input type="text"/>	<input type="text"/>	<input type="text"/>
<input type="text"/>	<input type="text"/>	<input type="text"/>

Associated WR #'s

<input type="text"/>	<input type="text"/>	<input type="text"/>
<input type="text"/>	<input type="text"/>	<input type="text"/>
<input type="text"/>	<input type="text"/>	<input type="text"/>
<input type="text"/>	<input type="text"/>	<input type="text"/>

Comments:



## LOAD INFORMATION

\*\*\*LOAD INFORMATION MUST BE SIGNED/SEALED BY A PROFESSIONAL ENGINEER\*\*\*

Ú[ ] & αÓ · q ^•• κÁ Á  
 αá! ^•• κÁ Á

Ú[ , ^! ÁÜ^~ á^ { ^} • κÁ  
 X[ | α^ κÁ      Á Γ Ε Δ Ε Γ Ε Ü @ ^ Á      Á Γ Ε Δ Ε Γ Ε Ü @ ^ Á  
 Á      Á Γ Ι Δ Ι Ε Γ Α Ε Ü @ ^ Á      Á @ ! κÁ Á

### ELECTRICAL EQUIPMENT

Á	\ X Ο Á
Ο Ε Δ Á	Á
Š Ÿ P V Ÿ Ÿ Ó Á	Á
Ü Ö Ö Ü V Ÿ Ÿ Š Ö Ü Á	Á
P Ö Ÿ V Ÿ Ÿ Ó Á	Á
Υ Ÿ V Ö Ü Á Ρ Ö Ÿ V Ö Ü Á	Á
Ô Ú T Ú W Ö Ü Ü Á	Á
Ü Ö Ÿ Ü Ÿ Ÿ Ö Ÿ V Ÿ P Á	Á
Ò Š Ö X Ÿ V Ü Ü Á	Á
T U V U Ü Ü Á	Á
U V P Ö Ü Á	Á
Á	Á
Á	Á
V U V Ÿ Ÿ Á	Á

Á  
Á

### GAS EQUIPMENT Á

Pressure Required _____ Á	BTU Á
Ÿ W Ÿ P Ÿ Ÿ Ö Ó Á	Á
Ó Ü Š Ö Ü Á	Á
Ô U U Ÿ Ÿ Ó Á	Á
Υ Ÿ V Ö Ü Á Ρ Ö Ÿ V Ö Ü Á	Á
Ú U U Š á Ü Ü Ÿ Ÿ P Ö Ÿ V Ö Ü Á	Á
Ÿ Ÿ Ÿ Á Š Ÿ Ÿ Ÿ Ÿ Ö Ÿ V Ÿ Ó Á	Á
U V P Ö Ü Á Ö Ü W Ÿ T Ö P V Á	Á
Á	Á
Á	Á
<b>TOTAL Á</b>	Á





# CPS ENERGY

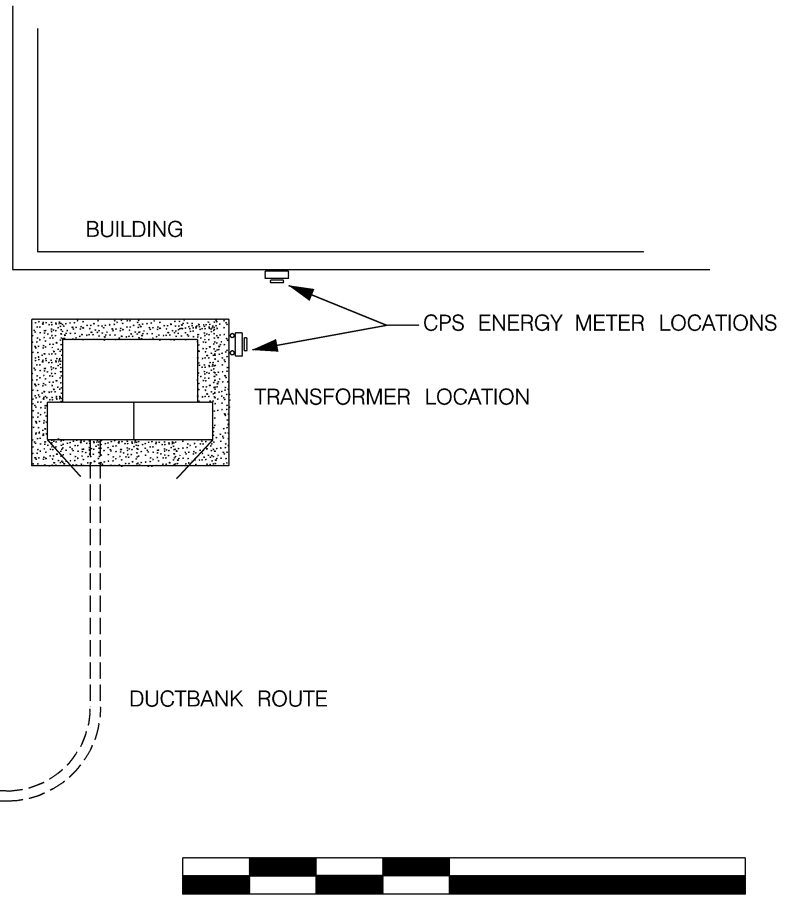
NOTE: FOR INFORMATION ONLY NOT FOR CONSTRUCTION

## PADMOUNT TRANSFORMER INSTALLATION, UNDERGROUND SERVICE

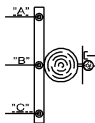


### ITEMS NEEDED ON UTILITY SITE PLAN:

- \* RISER POLE LOCATION
- \* TRANSFORMER LOCATION
- \* CPS ENERGY METER LOCATION
- \* DUCTBANK ROUTE
- \* EXISTING UTILITIES

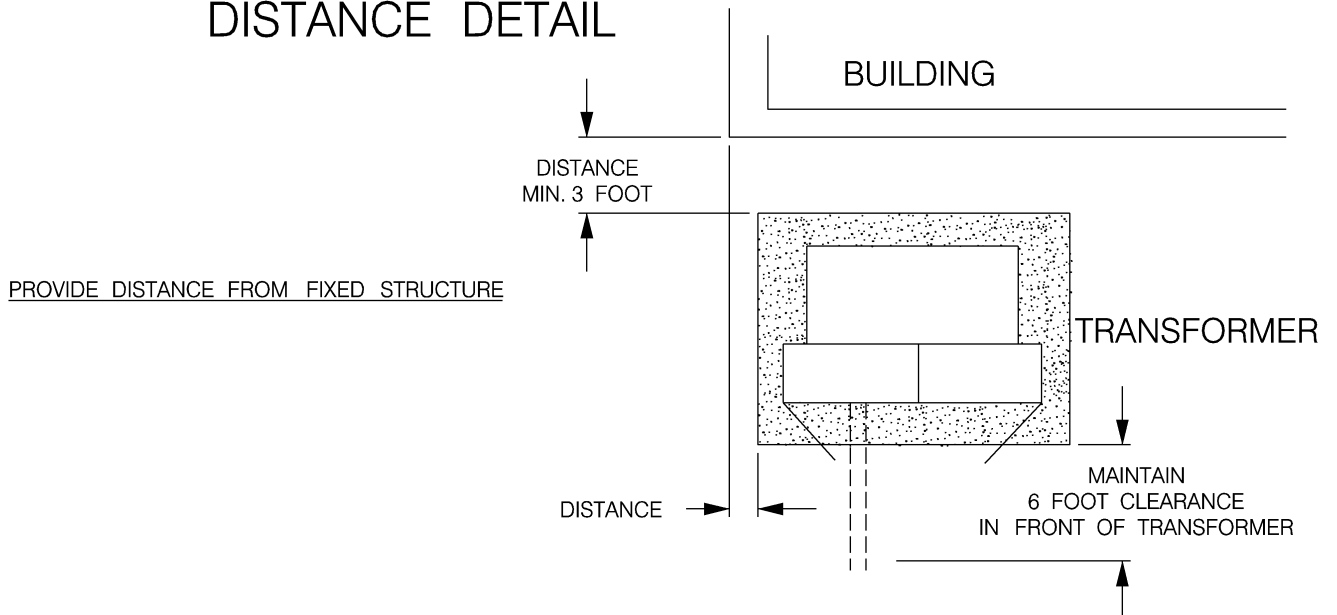


RISER POLE LOCATION



SCALE (Customer to provide documents to engineer scale)

## PADMOUNT TRANSFORMER INSTALLATION, DISTANCE DETAIL

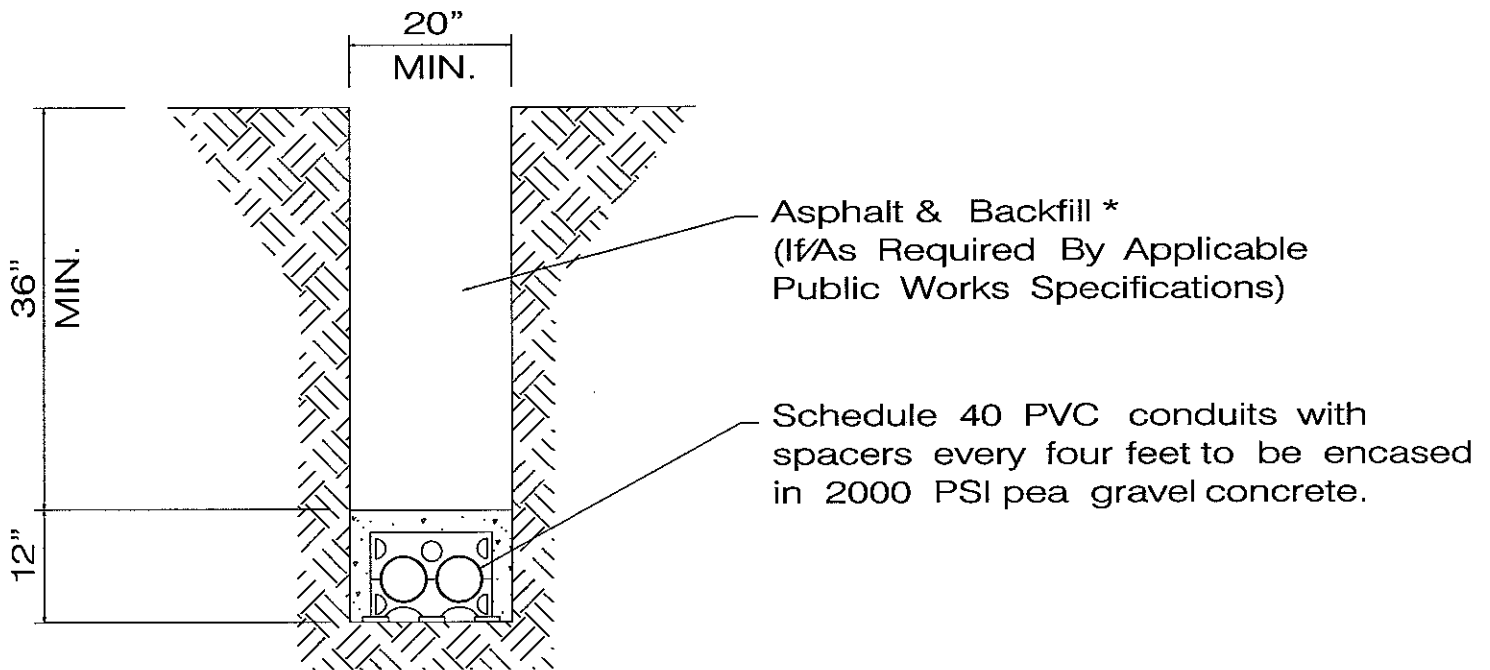






NOTE:

FOR INFORMATION ONLY  
NOT FOR CONSTRUCTION

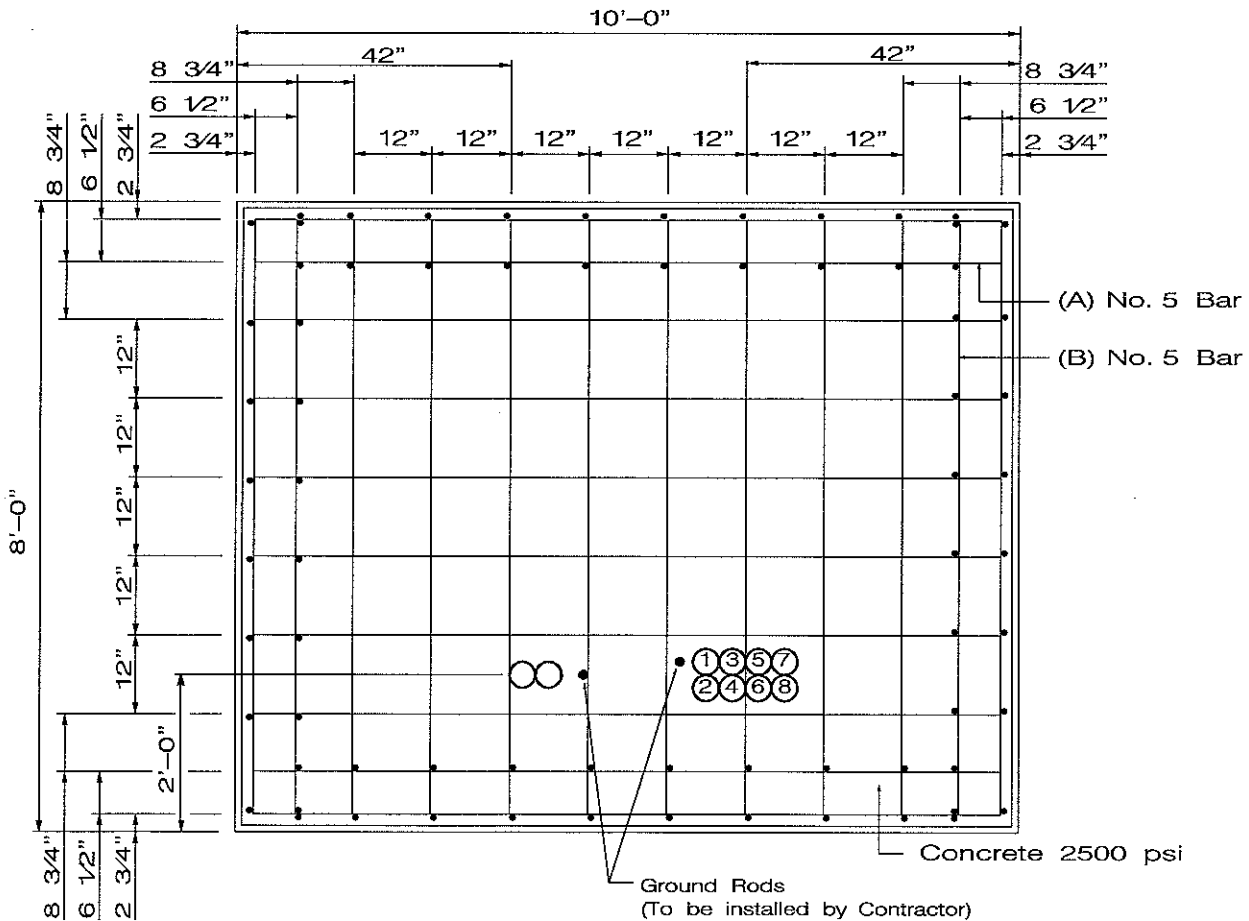
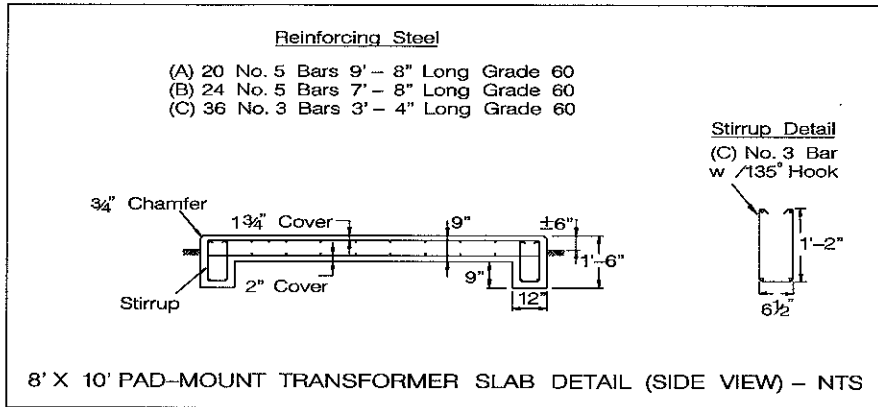


2-4" DUCTLINE DETAIL



NOTE:

FOR INFORMATION ONLY  
NOT FOR CONSTRUCTION



THERE SHALL BE NO PIPES, CONDUIT, ETC. UNDER THE SLAB EXCEPT THOSE NECESSARY TO SUPPLY PRIMARY TO THE TRANSFORMER AND THOSE TO SUPPLY THE ELECTRIC LOAD



NOTE:

FOR INFORMATION ONLY  
NOT FOR CONSTRUCTION

**TRANSFORMER SLAB REQUIREMENTS FOR WIREWAY APPLICATIONS:**

CUSTOMER'S EQUIPMENT SLAB SHALL INTERFACE WITH THE CPS ENERGY TRANSFORMER SLAB UTILIZING ONE OF THE FOLLOWING OPTIONS TO PREVENT DIFFERENTIAL MOVEMENT:

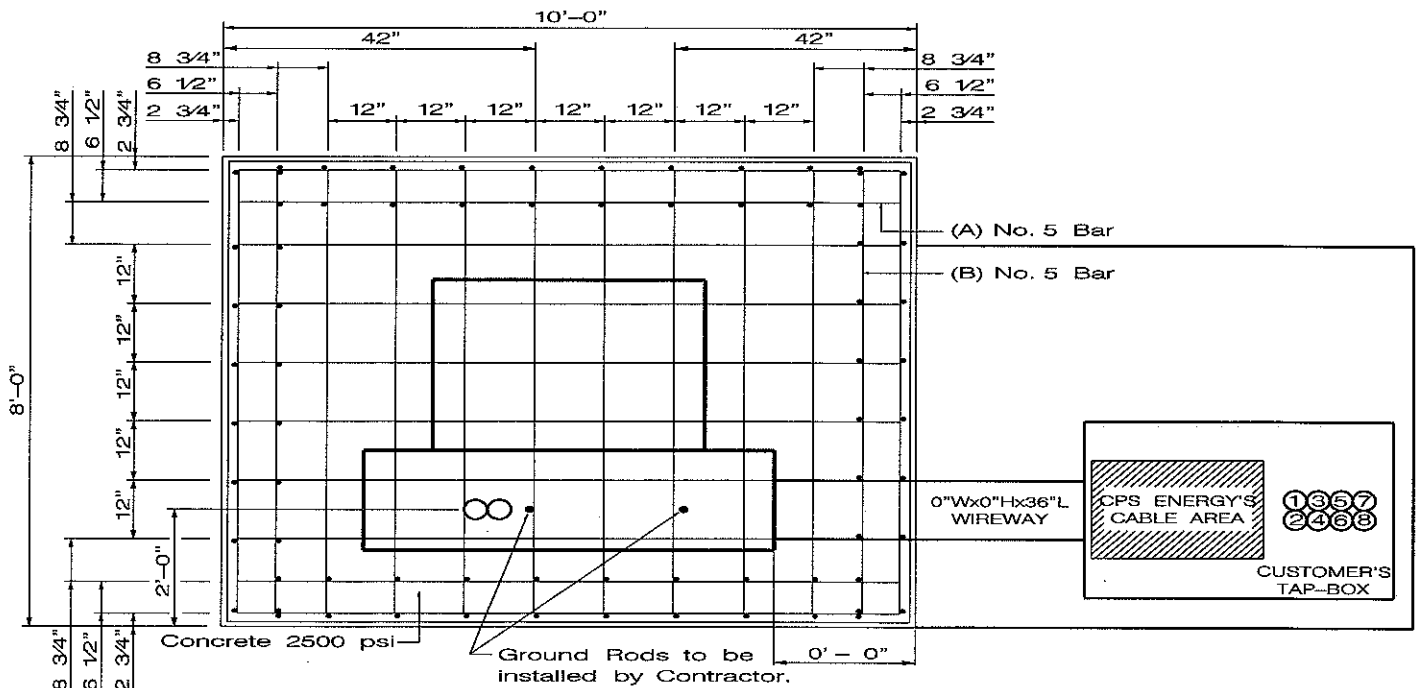
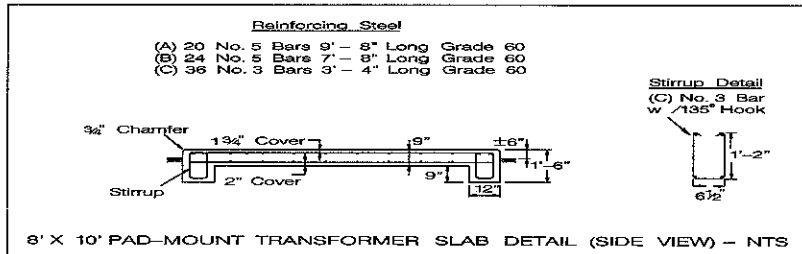
1. TOP AND BOTTOM SLAB REINFORCEMENT INSTALLED BY CUSTOMER MUST BE LAP SPLICED TO THE No.5 STEEL REINFORCING BARS OF THE CPS ENERGY TRANSFORMER SLAB. THE LAP SPLICES SHALL BE A MINIMUM OF 31 INCHES IN LENGTH.

OR

2. TOP AND BOTTOM No.5 STEEL REINFORCING BARS OF THE CPS ENERGY TRANSFORMER SLAB MAY BE INSTALLED OF SUCH LENGTH TO PROVIDE CONTINUOUS REINFORCEMENT ACROSS BOTH SLABS.

CPS ENERGY RECOMMENDS THAT THE CUSTOMER EQUIPMENT SLAB BE SUPPORTED BY A PERIMETER BEAM THAT MATCHES THE DEPTH AND WIDTH OF THE CPS ENERGY TRANSFORMER SLAB BEAM. IF PROVIDED, ALL CUSTOMER PERIMETER BEAM REINFORCING STEEL SHALL BE LAP SPLICED TO THE CPS ENERGY TRANSFORMER SLAB PERIMETER BEAM REINFORCING STEEL A MINIMUM OF 31 INCHES IN LENGTH.

THE CPS ENERGY TRANSFORMER SLAB AND CUSTOMER EQUIPMENT SLAB SHALL BE POURED MONOLITHICALLY.

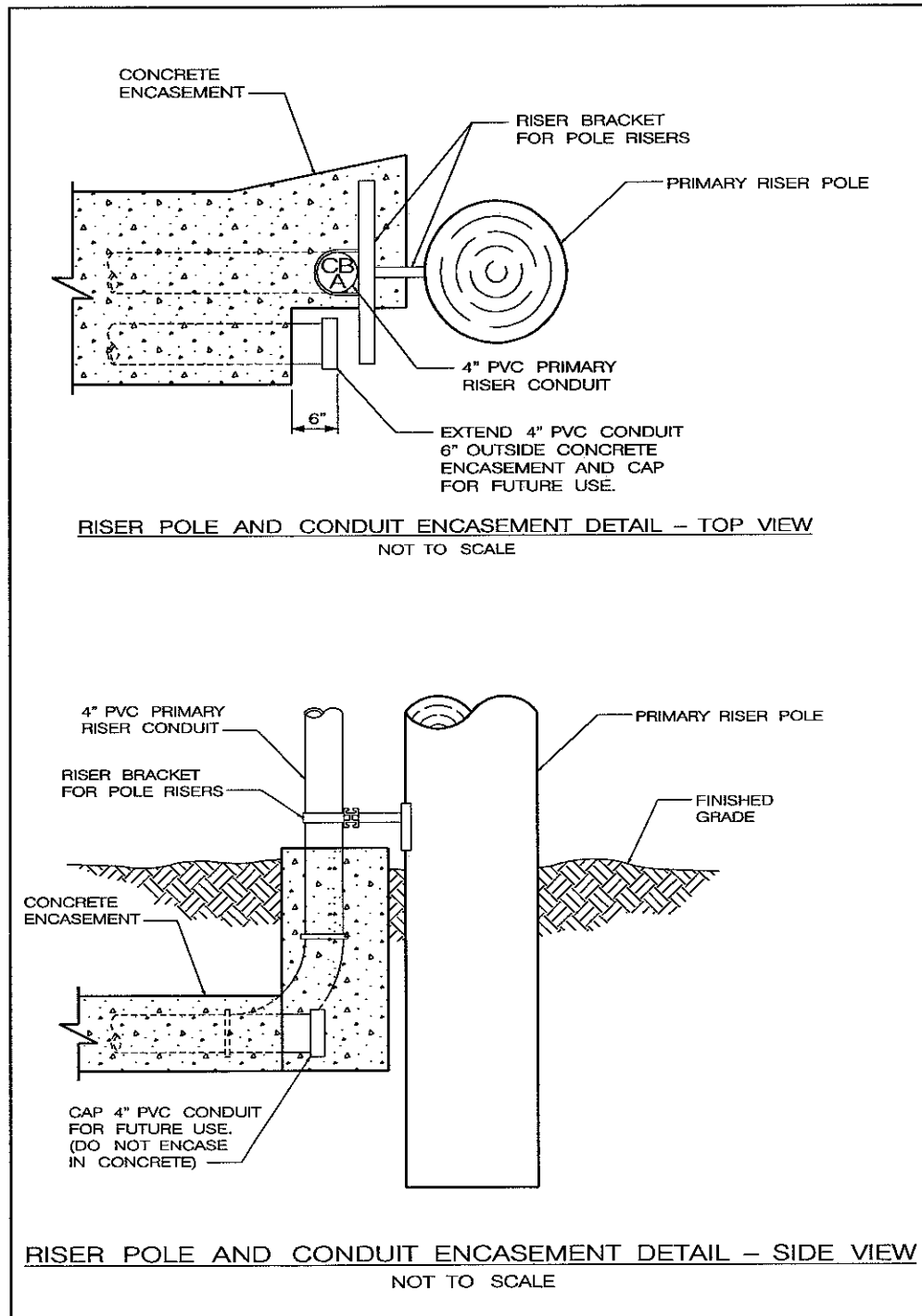


THERE SHALL BE NO PIPES, CONDUIT, ETC. UNDER THE SLAB EXCEPT THOSE NECESSARY TO SUPPLY PRIMARY TO THE TRANSFORMER AND THOSE TO SUPPLY THE ELECTRIC LOAD



NOTE:

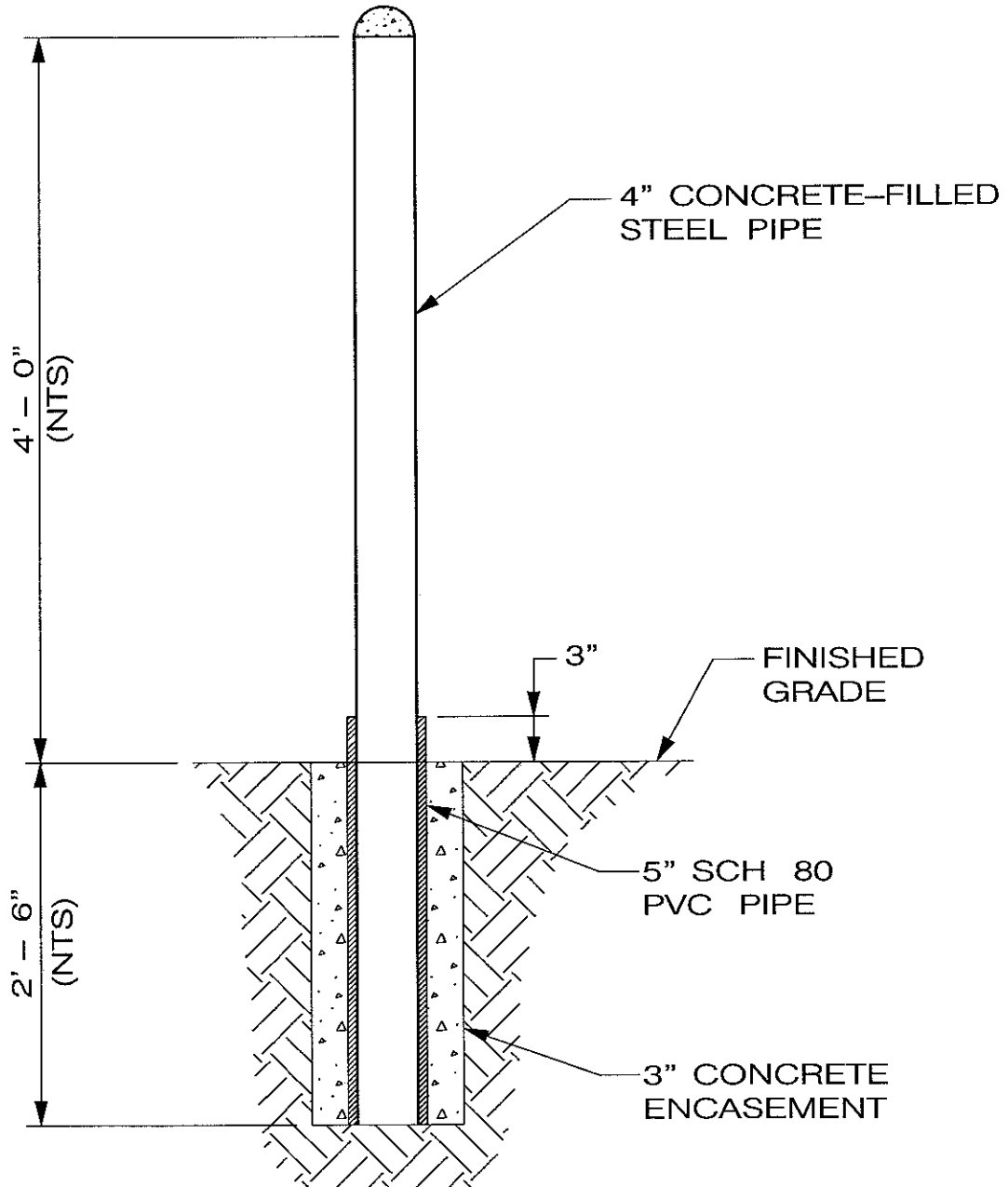
FOR INFORMATION ONLY  
NOT FOR CONSTRUCTION





NOTE:

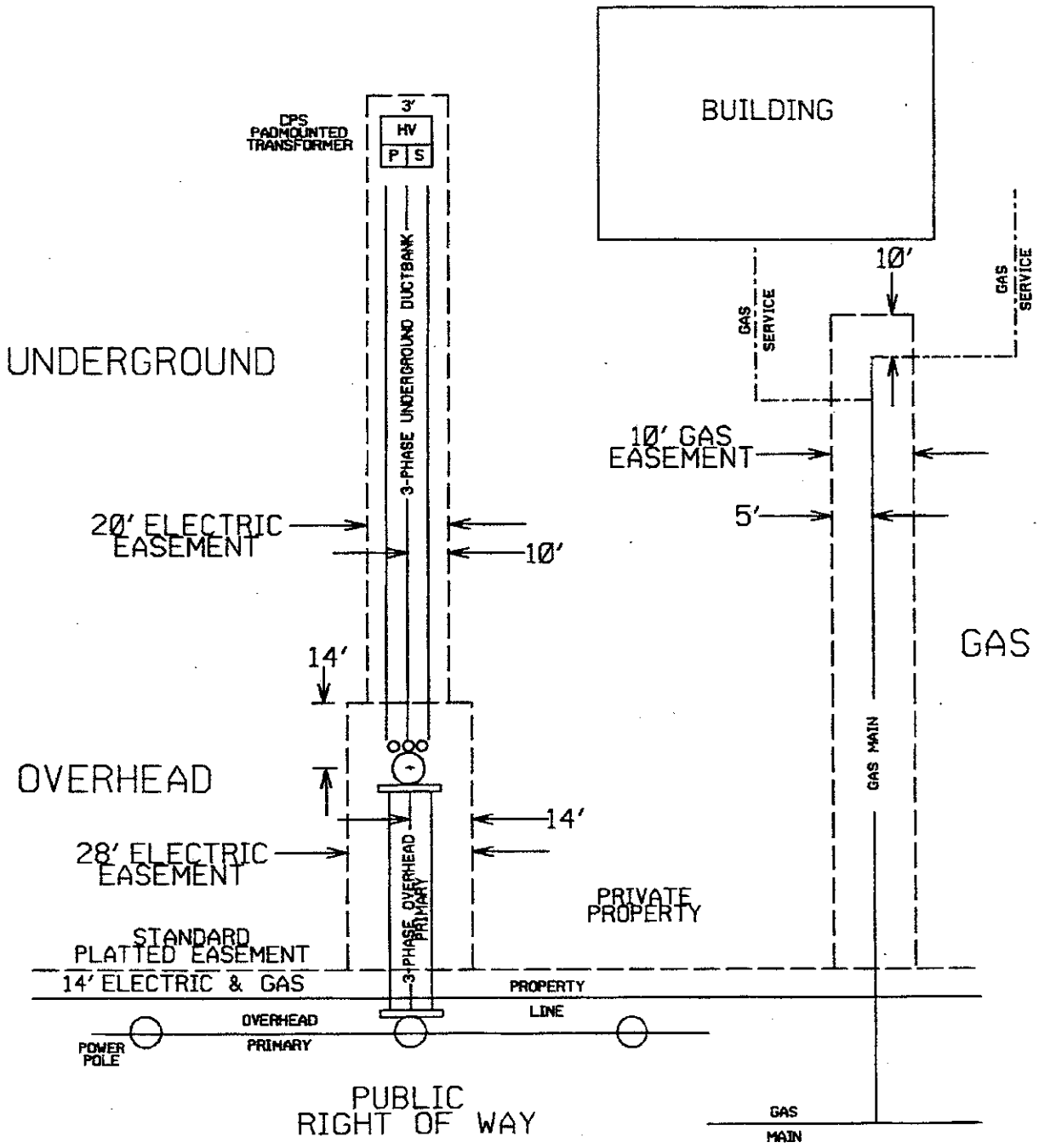
FOR INFORMATION ONLY  
NOT FOR CONSTRUCTION



## 4" REMOVABLE BOLLARD SPECIFICATION

PROFILE VIEW - NOT TO SCALE

# CITY PUBLIC SERVICE REQUIRED EASEMENTS (NOT TO SCALE)

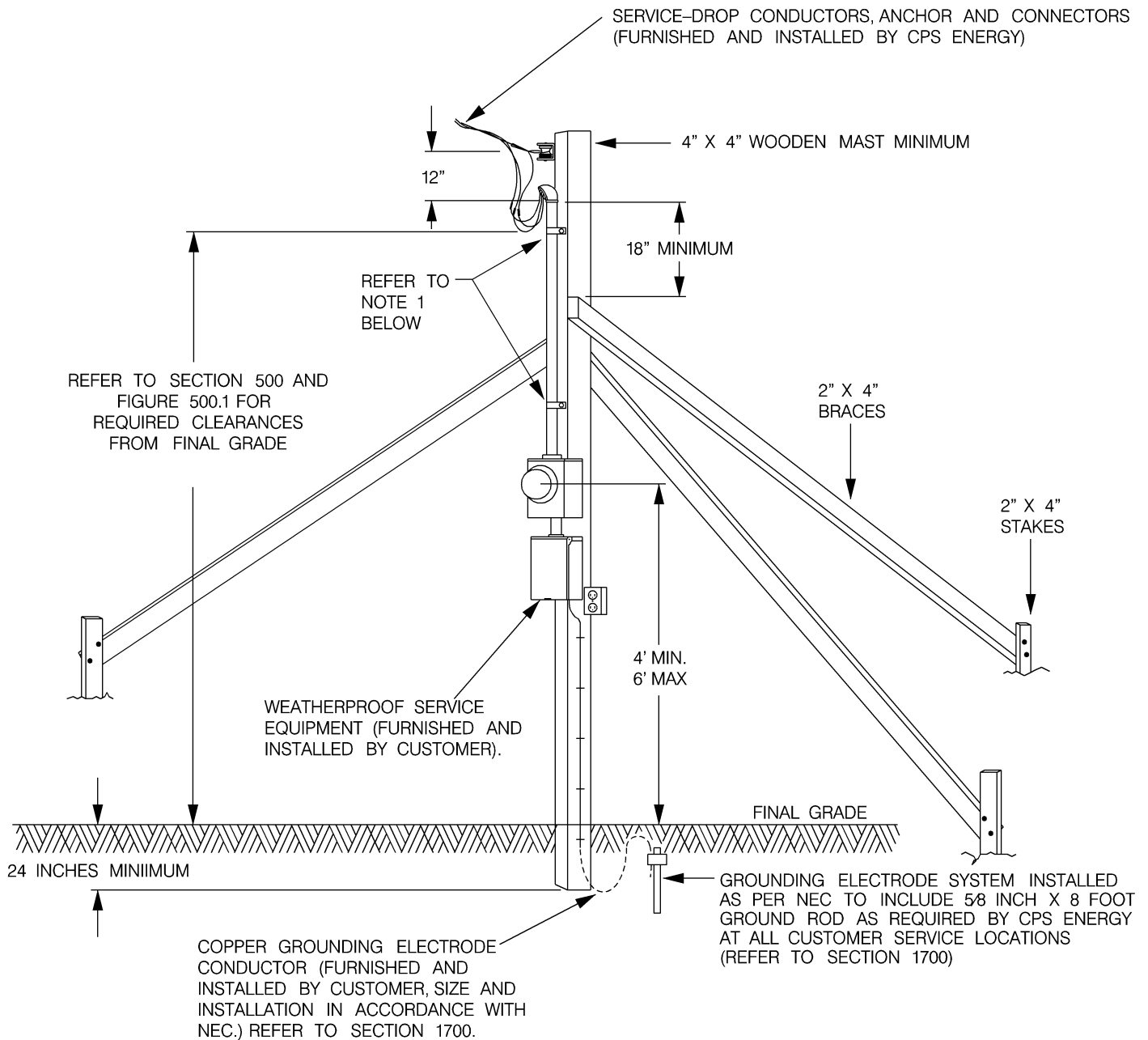




# CPS ENERGY

NOTE: FOR INFORMATION ONLY NOT FOR CONSTRUCTION

## TEMPORARY METER INSTALLATION, OVERHEAD SERVICE



### NOTES: (SEE CPS ENERGY ELECTRIC SERVICE STANDARDS BOOK)

1. SERVICE RACEWAY SHALL BE SUPPORTED WITH 2- HOLE STRAPS ATTACHED WITH SCREWS AND INSTALLED WITHIN 6 - 12 INCHES OF SERVICE HEAD AND OF METER ENCLOSURE.
2. 125- AMPERE METER SOCKET WITH 1 1/4 INCH HUB FURNISHED, INSTALLED AND WIRED BY CUSTOMER. REFER TO FIGURE 1800.1.
3. SERVICE OUTLET SHALL BE FURNISHED AND INSTALLED BY CUSTOMER. RACEWAY SHALL BE EMT, RMC OR IMC. MINIMUM SIZE OF SERVICE RACEWAY IS 1 1/4 INCH.
4. CUSTOMER SHALL CONSTRUCT THE TEMPORARY SERVICE INSTALLATION AS SHOWN ABOVE AND MAINTAIN IT IN A SAFE CONDITION THROUGHOUT ITS PERIOD OF USE. CPS ENERGY RESERVES THE RIGHT TO DISCONNECT DAMAGED OR UNSAFE TML'S.
5. THE TEMPORARY SERVICE INSTALLATION MUST BE IDENTIFIED WITH A PROPER SERVICE ADDRESS BEFORE CPS WILL CONNECT AND INSTALL A METER.

